

The **SunWize**

80W/24V C1D2 SOLAR MODULE

High-quality module provides reliable solar electric power for industrial applications in hazardous locations including monitoring and control, security, telecom, instrumentation, communications, and general battery charging. Up to two bypass diodes protect against hot-spot damage during partial shading. The junction box has four half-inch conduit knockouts. This module features UL-1703, C1D2, and CE certifications.

POWER RATINGS

Rated Power (Watts)	80W
Voc Open Circuit Voltage	46.08V
ISC Short Circuit Current	2.17A
VMP Rated Voltage	39.10V
IMP Rated Current	2.04A
Max System Voltage	600 VDC
Series Fuse Rating	10A

ELECTRICAL/THERMAL PARAMETERS

Voltage Temperature coefficient	-0.31% / °C
Current Temperature coefficient	0.05% / °C
Power Temperature coefficient	-0.36% / °C
Peak Power Tolerance	+/-3%
Temperature Range	-40°C to +85°C

CERTIFICATIONS & STANDARDS

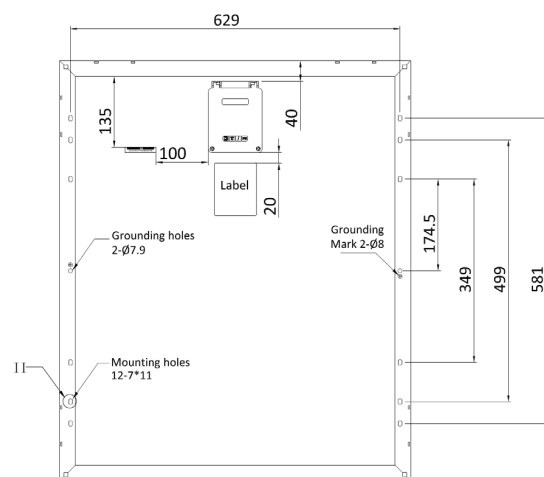
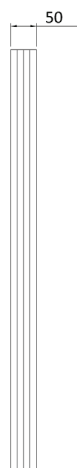
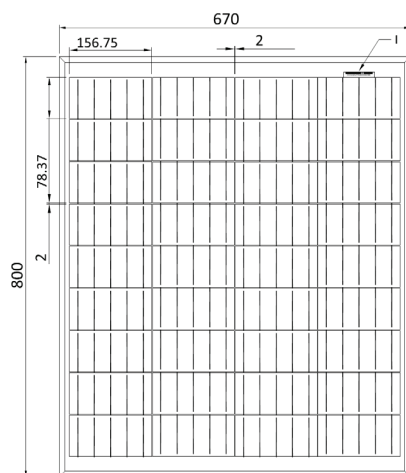
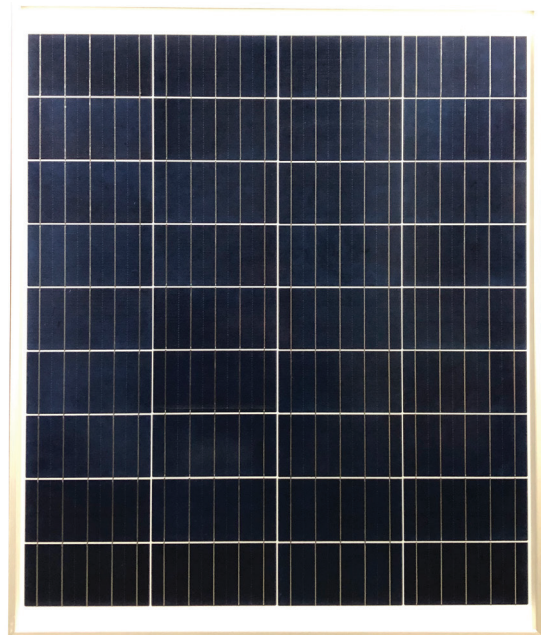
UL 1703, ULC/ORD - C1703-01, Class 1 Division 2 Group A,B,C, and D

WARRANTY

Five years on material, ten years on performance, 20 years on performance (pro-rated based on performance degradation)

DIMENSION AND WEIGHT

Module Size (LxWxD) inches	26.37 x 31.99 x 1.97
Module Size (LxWxD) mm	670 x 800 x 50
Weight (lb/kg)	15.40/7.00


SHOP NOW


(866) 827-6527