

The **SunWize**

30W C1D2 SOLAR MODULE

High-quality module provides reliable solar electric power for industrial applications including monitoring and control, security, telecom, instrumentation, communications, and general battery charging. Up to two bypass diodes protect against hot-spot damage during partial shading. The junction box has four half-inch conduit knockouts. This module features C1D2, UL-1703, and CE certifications.

POWER RATINGS

Part Number	021210	020116
Nominal Voltage	24V	12V
VOC Open Circuit Voltage	44.92V	22.50V
ISC Short Circuit Current	0.86A	1.71A
VMP Rated Voltage	37.52V	18.65V
IMP Rated Current	0.80A	1.61A
Max System Voltage	600VDC	600VDC
Series Fuse Rating	15A	15A

DIMENSIONS

Module Size, in, (LxWxD)	26.4" x 16.2" x 2.0"
Module Size, mm, (LxWxD)	670 x 412 x 50
Weight (lb/kg)	7.9lb / 3.6kg

ELECTRICAL / THERMAL PARAMETERS

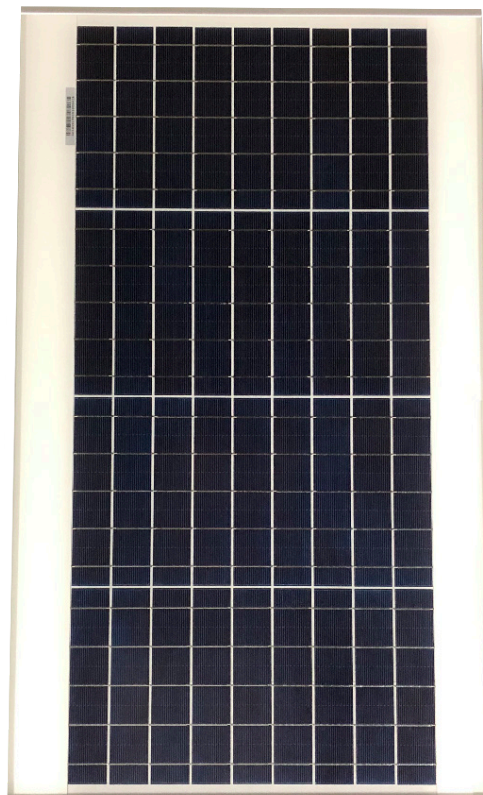
Voltage Temperature Coefficient	-0.31% / °C
Current Temperature Coefficient	0.05% / °C
Power Temperature Coefficient	-0.36% / °C
Peak Power Tolerance	+/-3%
Temperature Range	-40°C to +85°C

CERTIFICATIONS & STANDARDS

UL 1703, ULC/ORD - C1703-01, Class 1 Division 2 Group A,B,C, and D

WARRANTY

Five years on material, ten years on performance, 20 years on performance (pro-rated based on performance degradation)



DIMENSIONS

