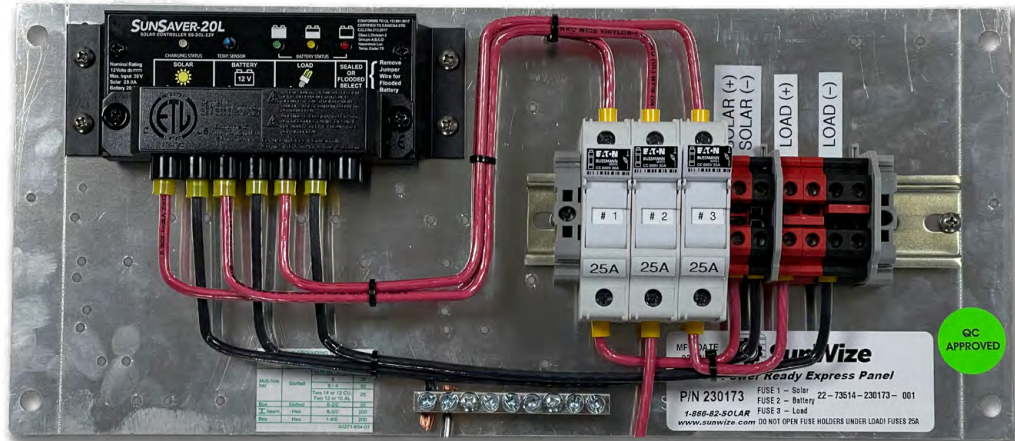
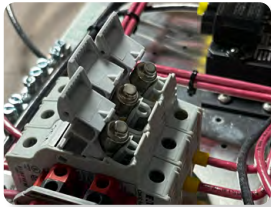
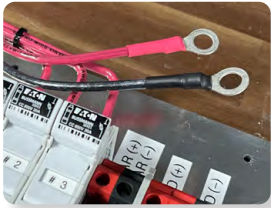


PRE CONTROL PANEL - SUNSAVER 20A C1D2

230173 / 230174



C1D2
RATED

SUNWIZE POWER READY EXPRESS CONTROL PANELS ARE PREWIRED ALUMINUM PANELS, DESIGNED FOR STAND-ALONE PV SYSTEMS.

This control panel has all of the necessary switchgear to hook up the charge/load controller to a solar array, battery bank and load. Includes three LP-CC-25 Fuses and one spare.

The 20A PWM controller can support solar arrays with maximum open circuit voltages up to 30V/60V.

CONTROLLER SPECS	230173	230174
Charge Controller Model	SS-20L-12V	SS-20L-24V
Battery Voltage	12v	24v
Max Array Voltage (Voc)	30v	60v
Max Battery & Load Current	20A	20A
LED Status Indicators	Yes	Yes

ELECTRICAL/THERMAL PARAMETERS	
Operating Temperature	-40c to 60c
12V Battery Voltage Range	6V - 15.5V
24V Battery Voltage Range	6V - 31.0V
Max In-Rush Current	65A
12V Temp. Compensation	-30mV / C / Cell
24V Temp Compensation	-60mV / C / Cell

CERTIFICATIONS AND STANDARDS
Class 1 Division 2 Group A,B,C, and D

FEATURES:

- 100% solid state controller
- Class 1 Division 2 rating
- Pre-wired, fully assembled, QC tested
- Two (2) load connections
- Separate fuses for the array, battery, and load
- Fuses and charge controller are rated for hazardous locations

CHARGE CONTROLLER FEATURES:

- 4-stage advanced charging
- Low 8 milliamps power consumption
- Load high voltage disconnect
- Epoxy encapsulation protection
- LEDs display status/fault/battery info
- 5-year charge controller warranty

WARRANTY

Five years on material, ten years on performance, twenty years on performance (pro-rated based on performance degradation)

DIMENSION AND WEIGHTS

Panel Size (LxWxH) inches	15" x 10" x 4"
Panel Size (LxWxH) mm	381 x 254 x 101.6
Weight (lb/kg)	12Lb / 5.4kg

SHOP NOW



LOCATIONS
Oregon Warehouse
New York Warehouse
(866) 827-6527

