

C1D2 SOLAR MODULE (195W / 12V & 24V)

12V- 020966 , 24V- 020967

30w

50w

65w

80w

110w

160w

180w

195w

320w

High quality C1D2 rated solar module provides reliable solar electric power for industrial applications including monitoring and control, security, telecom, instrumentation, communications, and general battery charging.

Up to two bypass diodes protect against hot-spot damage during partial shading.

The junction box has four half-inch conduit knockouts. This module features UL1703, C1D2, and CE certifications.

ELECTRICAL SPECIFICATIONS

	12v 020966	24v 020967
Rated Power (Watts)	195w	195w
Max Power Voltage (Volts)	20.54v	41.08v
Max Power Current (Amps)	9.48A	4.74A
Voc Open Circuit Voltage (Volts)	24.35v	48.7 v
Isc Short Circuit Current (Amps)	10.06A	5.03A
Max System Voltage (VDC)	600v	600v

DIMENSION AND WEIGHTS

Module Size (LxWxD) inches	59.6" x 26.8" x 1.9"
Module Size (LxWxD) mm	1515mm x 680mm x 50mm
Weight (lb/kg)	30.7lb / 14.0kg

ELECTRICAL/THERMAL PARAMETERS

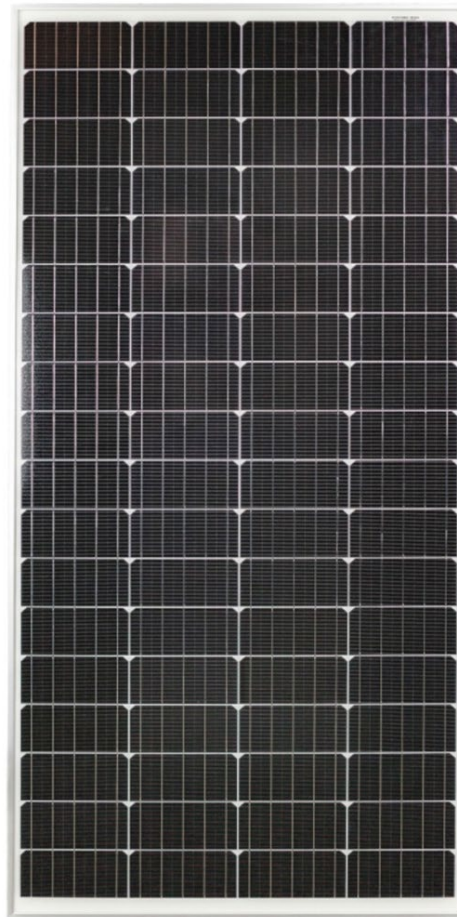
Voltage Temperature Coefficient (Voc)	-0.32%/°C
Current Temperature coefficient (Isc)	0.05%/°C
Power Temperature coefficient (Pmax)	-0.41%/°C
Peak Power Tolerance	+/- 3%
Temperature Range	-40°C to +85°C

CERTIFICATIONS AND STANDARDS

UL 1703, ULC/ORD - C1703-01,
Class 1 Division 2 Group A,B,C, and D

WARRANTY

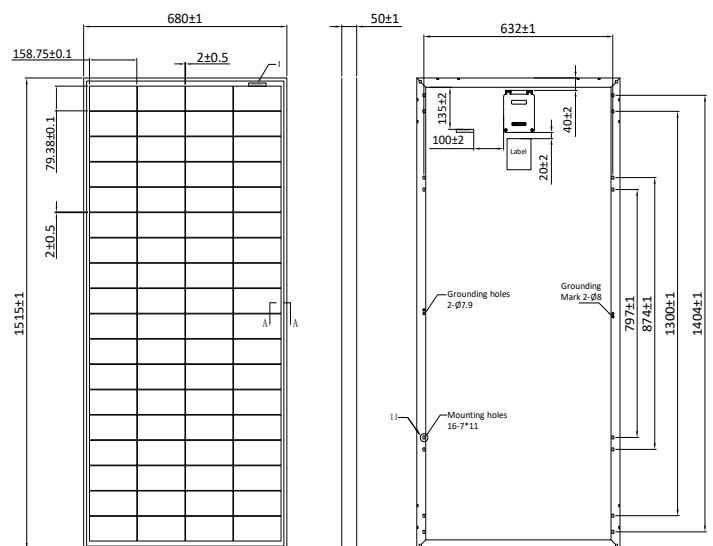
Five years on material, ten years on performance, 20 years on performance (pro-rated based on performance degradation)



Junction Box



C1D2
RATED



SHOP NOW



LOCATIONS
Oregon Warehouse
New York Warehouse
(866) 827-6527

