

Self Standing Solar Structure - Steel Skid

250160

PRODUCT DESCRIPTION:

- The SunWize® Power & Battery Steel Skid structure is a quick solution for temporary or long-term system deployment.
- The hot dipped galvanized steel skid requires no pre-existing structure for mounting and can hold a complete solar power system, including enclosure, batteries, modules and electronics.
- The skid supports SunWize series enclosures, listed below, which can fit up to (4) BCI Group 8D Batteries or (8) BCI Group 31 batteries. The enclosure is easily accessible at the back of the skid behind the modules.
- Requires user supplied ballast blocking. Two ballast trays will accommodate 4" x 8" x 16" concrete blocks.

KEY FEATURES:

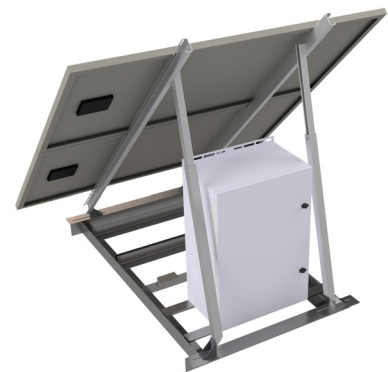
- Hot dipped galvanized steel frame is welded for durability.
- Large format module support
- Easy deployment
- Can hold complete power system
- Adjustable module angle from 42 degrees to 55 degrees

SUPPORTS:

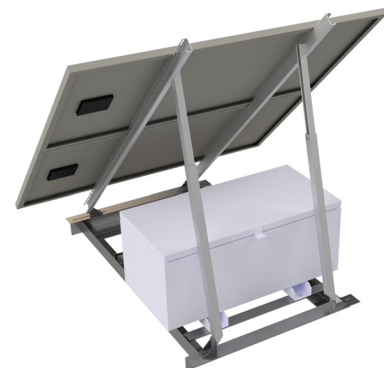
- Up to (2) 40" wide large format solar modules 360W/ea or 720W solar array, (Modules sold separately)
- Up to a 1,060Ah of energy storage at 12VDC (Batteries sold separately)
- Compatible with M2-8D or T-4x8D chest enclosure (Enclosure sold separately)
- [008079](#) - 96" Roof/Ground Mount (Roof/Ground mount sold separately)



- Shown with (2) 365W large format modules and [008079](#) - 96" RGM



- Shown with [260019](#) - M2-8D



- Shown with [004140](#) - T-4x8D



- 250160

