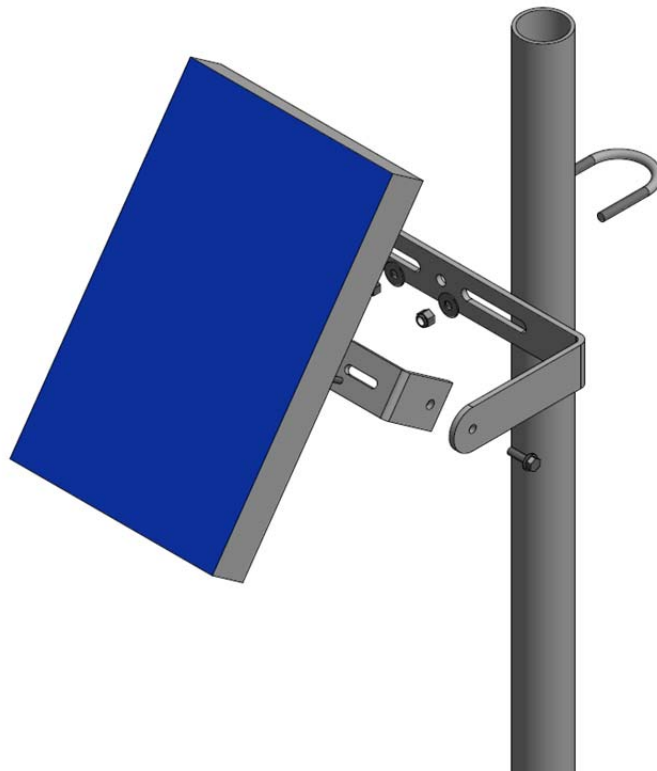




# SunWize Power & Battery

## Little Mount Installation Guide

P/N 240009



## Mount Assembly and Installation

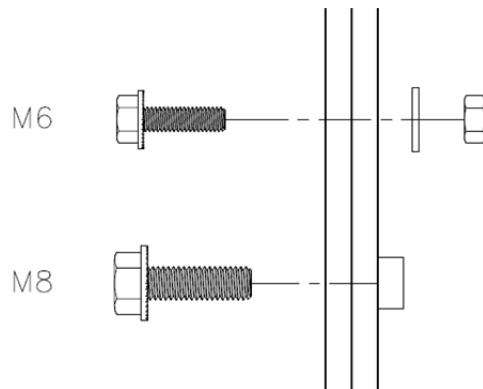
The Little Mount is designed for 2"-6" diameter standard round SCH40 steel poles. Ensure that the pole used matches the optimal range for the racking equipment provided.

### Included Parts and Hardware:

- 1x U-bar
- 2x Angle bracket
- 2x M8 x 25mm Screw
- 2x M8 Washer
- 2x M6 x 20mm Screw
- 2x M6 Nylock Nut
- 2x M6 Washer
- 1x U-Bolt for 2" Pipe
- 1x Packet of Anti Seize

### Hardware Note:

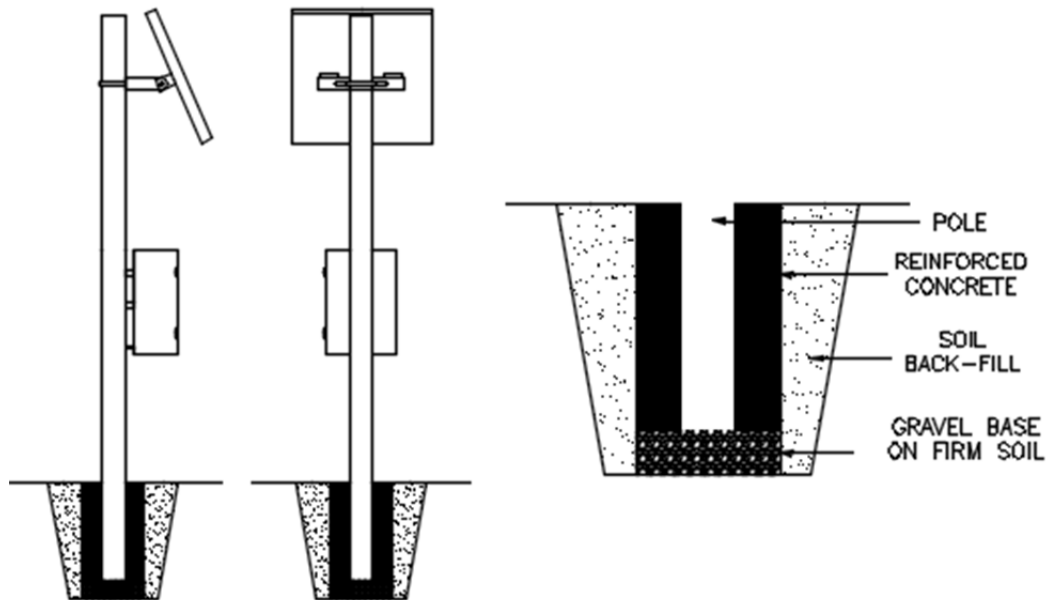
- When installing hardware, the washer is always placed on the same side as the nut (see Figure 1 below).
- Apply anti-seize to all hardware to prevent galling.



**Figure 1:** Always place washer on the same side as nut.

## Pole Mount Site Preparation

- The pole used to support the photovoltaic array must be designed per the local soil conditions to meet the following minimum requirements:
  - Array area based at tilted angle
  - Typical sustained wind speed per the recommended local building code.
- The pole is to be seated against a firm crushed stone base, on firm compacted soil a minimum of 6" below the frost line encased in reinforced concrete per ASTM standards.
- The pole is to be level and plumb.
- The pole diameter and wall thickness sized to withstand array forces without damage.



**Figure 2:** *Proper installation of Little Mount PV system*

## Little Mount Installation

- Step 1: Measure the mounting-hole spacing of your module.
- Step 2: Use the provided M8 hardware and preinstalled nuts to attach the angle brackets to the U-bar. If module hole spacing is 12.5" or less, bolt the angle brackets to the inside of the U-bar (Figure 3). If the module hole spacing is greater than 17.75", bolt the angle brackets to the outside of the U-bar (Figure 4).



Figure 3



Figure 4

- Step 3: Mount module to the angle brackets using the M6 hardware (Figure 5).
- Step 4: Mount the U-bar tightly to the pole with a U-bolt (Figure 6). Make sure the mount faces SOUTH.

**Note:** The provided U-bolt has M8 threads.

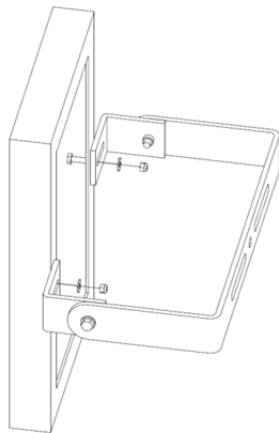


Figure 5

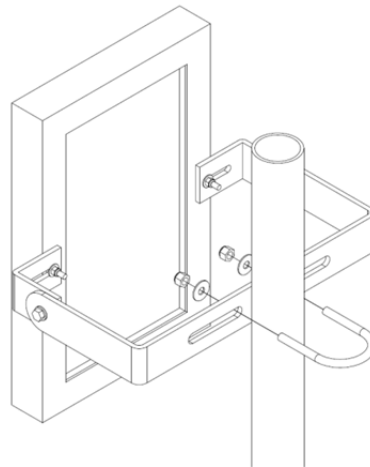


Figure 6

- Step 5: Adjust the module to the desired angle and tighten all bolts. M8 hardware should be tightened to 18 ft-lbs and M6 hardware to 7.5 ft-lbs.