

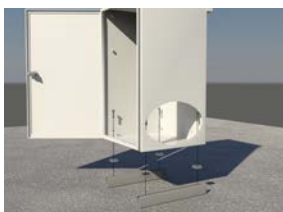
## Pole Mounting Bracket for F, WF and C Series Enclosures



Aluminum brackets feature a slot design allowing use of 2" – 8" pipe diameter U-Bolts or band clamps, and a slot that allows up to 1" thick banding for large diameter pole mounting. Brackets feature tamper-resistant design and include stainless steel mounting hardware (U-bolts not included).

SWPB Part#	Model	Finish	Description	Dimensions H x W x D (inches)	Weight (lbs.)
<a href="#">004386</a>	F-BKTSET	Power-coated	Premium	2 x 2 x 13	2.0
<a href="#">004387</a>	E-BKTSET	Mill-finished	Economy	2 x 2 x 13	2.0

## Pad Mounting Brackets for F, M, WF and C Series Enclosures



Pre-cut aluminum channel allows the enclosure to be mounted to the ground without impeding door operation or ventilation. Model PD-MTGKSET includes (2) pre-cut and drilled struts and mounting hardware to mount the enclosure to the bracket. Models PD-M8D and PD-M31 include an M-Series ground mount, (4) I-brackets, and mounting hardware. Pad mounting hardware not provided. The enclosure must be drilled to accept mounting hardware.

SWPB Part#	Model	Description	Dimensions H x W x D (inches)	Weight (lbs.)	Enclosure Type
<a href="#">004373</a>	PD-MTGKSET	Pad Mounting Bracket	1.6 x 1.6 x 20	4.0	F & C Series
<a href="#">270082</a>	PD-M8D	Pad Mounting Bracket	1.75 x 1.50 x 24	5.0	M2-8D, M1-8D
<a href="#">270083</a>	PD-M31	Pad Mounting Bracket	1.75 x 1.50 x 16	4.0	M1-31

## Power Electronics Mounting Panels



Panels are made of 0.080" MIN brushed aluminum with mounting holes aligned for enclosure's interior studs. Rear panels can be purchased blank or with optional pre-drilled configuration for mounting of control equipment. F-HC-RP-B and F-HC-RP-D are universal fits, accommodating a G31 size battery or larger. F-HC-RSP models for use in F-series enclosures only.

SWPB Part#	Model	Description	Dimensions H x W (inches)	Weight (lbs.)
<a href="#">004228</a>	F-HC-RP-B	Rear panel-blank	15.0 x 6.5	1.0
<a href="#">004237</a>	F-HC-RP-D	Rear panel-drilled	15.0 x 6.5	1.0
<a href="#">007871</a>	F-HC-RSP-1B	Right side-blank	8.75 x 3.75	0.5
<a href="#">007872</a>	F-HC-RSP-2/4B	Right side-blank	9.5 x 6.25	0.5
<a href="#">250004</a>	F-HC-RP-TF4	Rear panel-blank	15.4 x 13.25	2.0
<a href="#">004135</a>	BC 45-60	Rear panel-drilled	15.0 x 7.5	1.0
<a href="#">004198</a>	MP-T	Top Mounting Plate	17.0 x 17.0	3.0
<a href="#">007877</a>	WF-RP-D	Rear panel-drilled	24.0 x 16.0	2.5
<a href="#">240015</a>	Radio Shelf	Radio Shelf	15.0 x 7.5	1.0

**SHOP NOW**



**Headquarters**  
30893 Ehlen Dr Sw  
Albany, OR 97321  
(866) 827-6527

