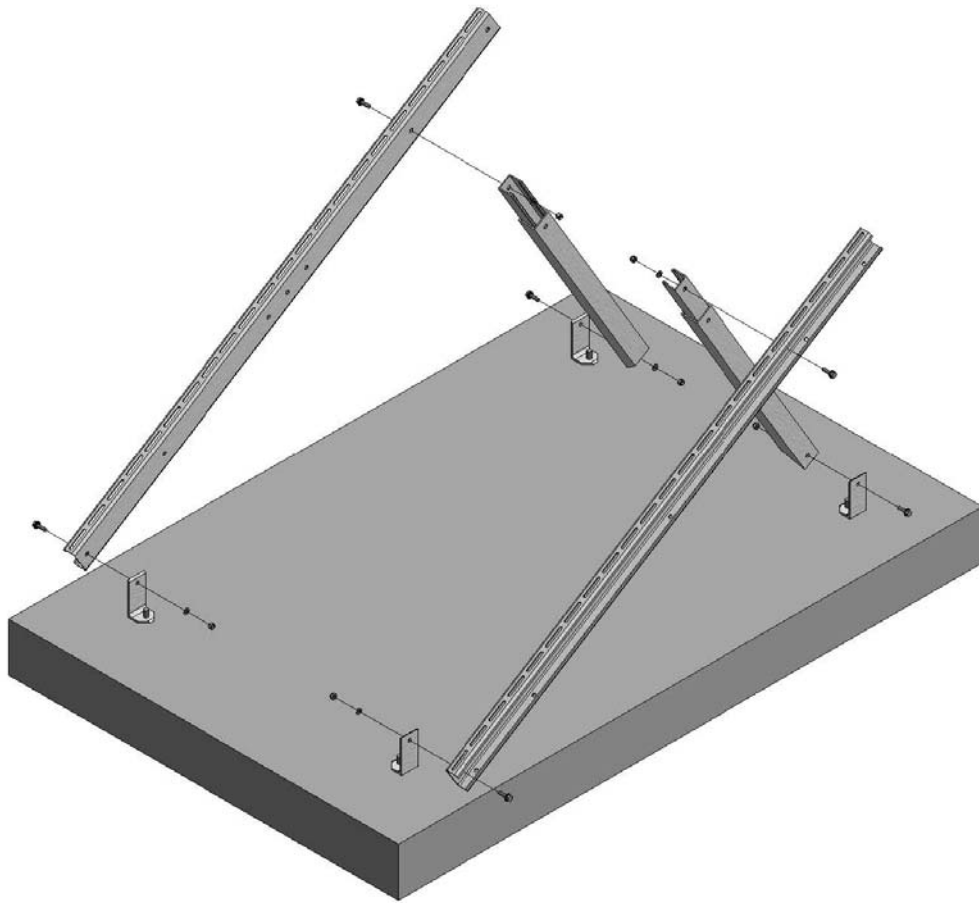


# SunWize Power & Battery Mount Installation Guide Roof/Ground Mount



## Mount Assembly and Installation: (RGM) Roof/Ground Mounts

Standard SOP mounts are as follows:

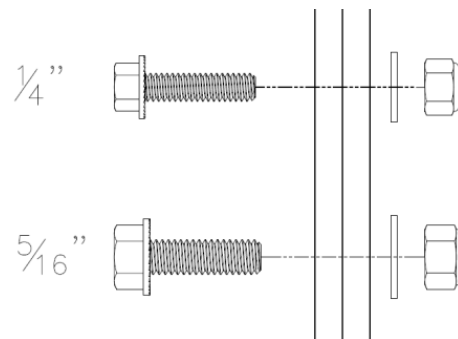
Part #	Rail Length (inches)	Small Format Qty.	Large Format Qty.
Small Format			
007959	27	1	N/A
240024	44	1	1
008077	60	2	1
008079	96	3	2
008068	110	4	2

The mount consists of:

- 2x Module rails
- 4x L-Brackets
- 2x Tilt arms
- 1/4" and 5/16"SS hardware kits as needed

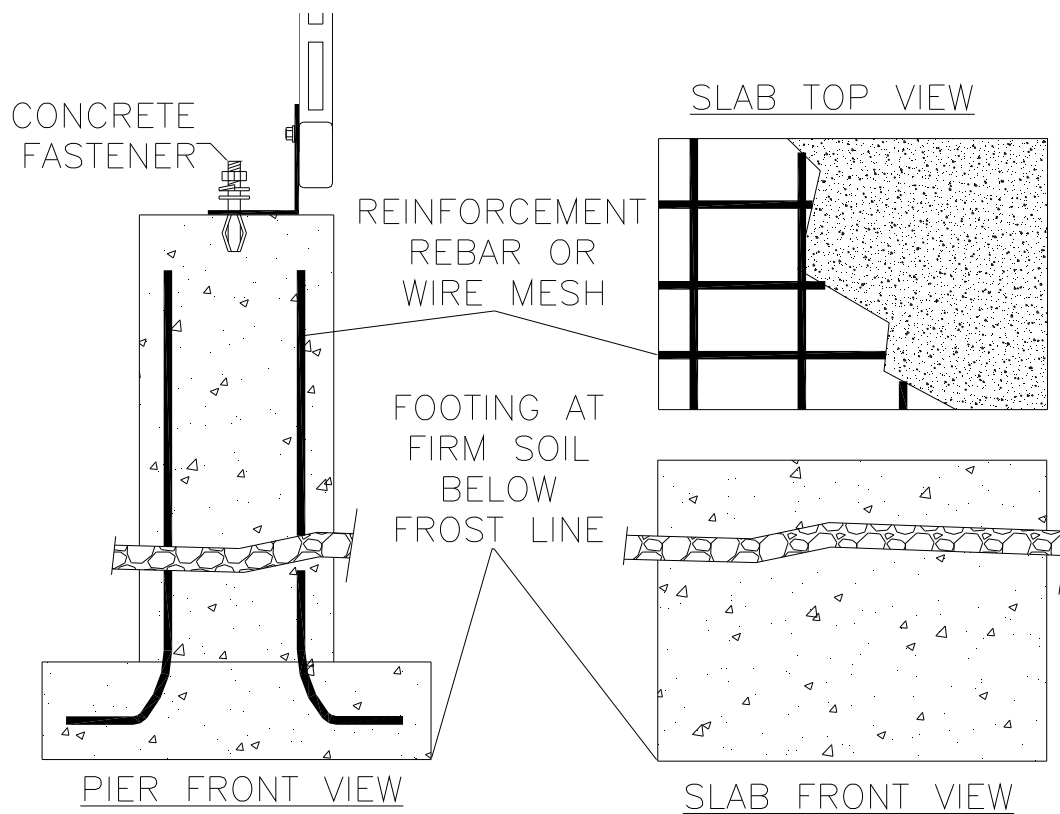
### Hardware Note:

When installing hardware, the washer is always placed on the same side as the nut.



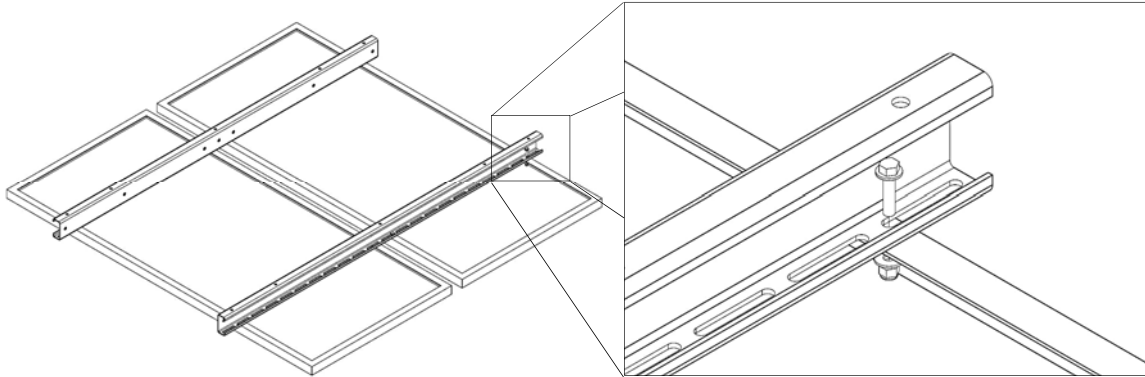
## Ground Site Preparation

- The foundation for the array can be any of the following options:
  - Poured reinforced concrete slab
  - Poured reinforced concrete footing pier
  - Structural steel or treated lumber beam supported on poured reinforced concrete footing pier
- All concrete is to be engineered to meet ASTM requirements for local soil conditions. Surface should be level and free of cracks or voids.
- All footings are to be on firm compacted soil a minimum of 6" below frost line.
- Fasteners are to be stainless steel, 1/2" diameter suitable for self-anchoring into concrete surfaces.

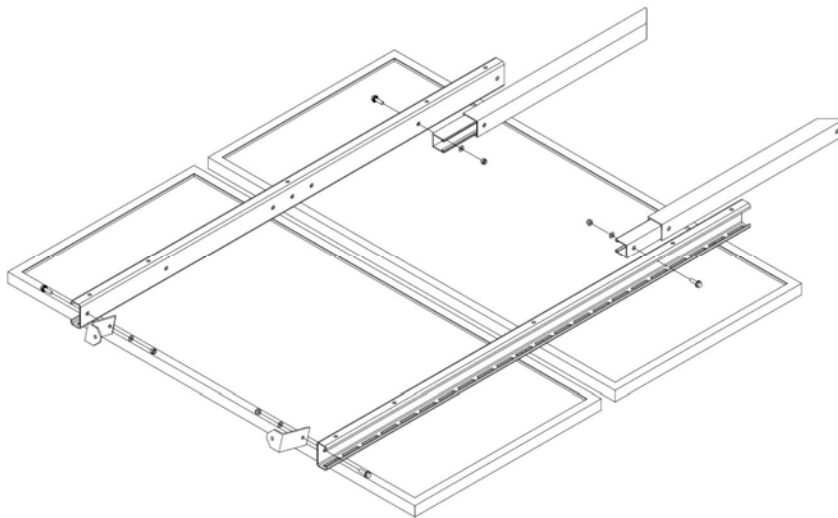


## Mount Installation

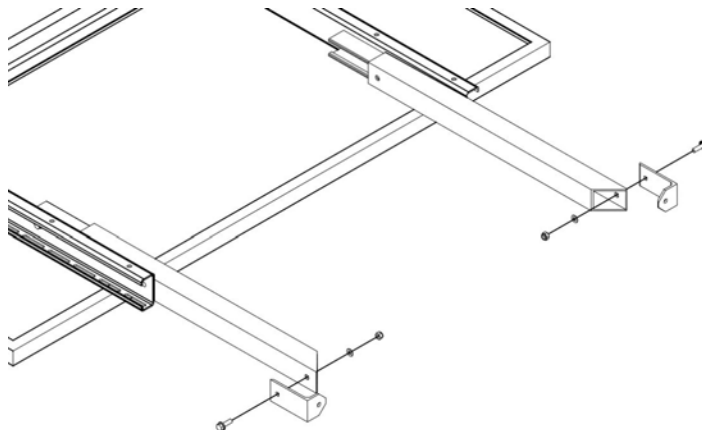
1. Place your solar modules face down and mount the rails to the back of them using the 1/4" hardware provided.



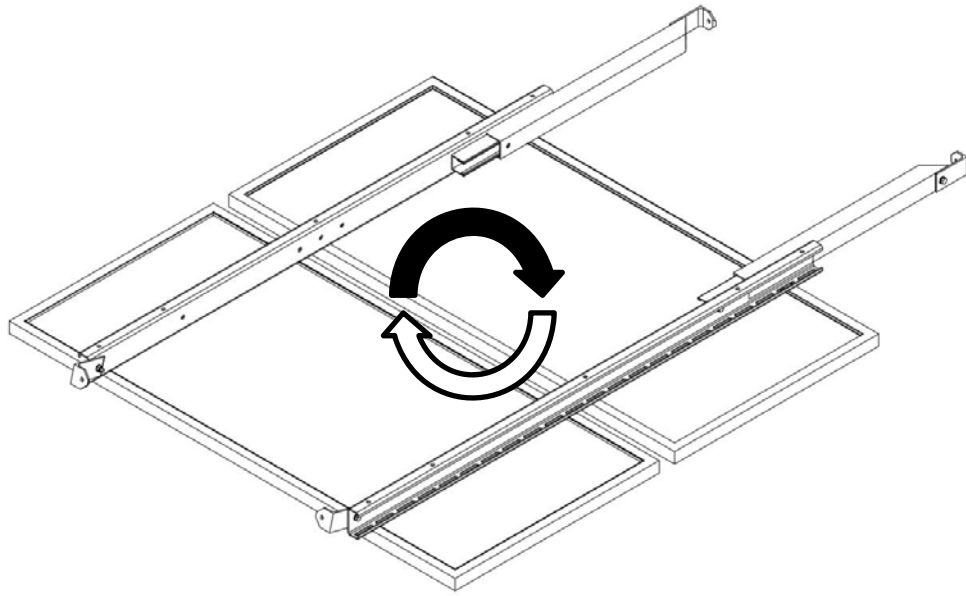
2. Attach the front mounting feet to one end of the rails and the tilt legs towards the other end using the 5/16" hardware provided.



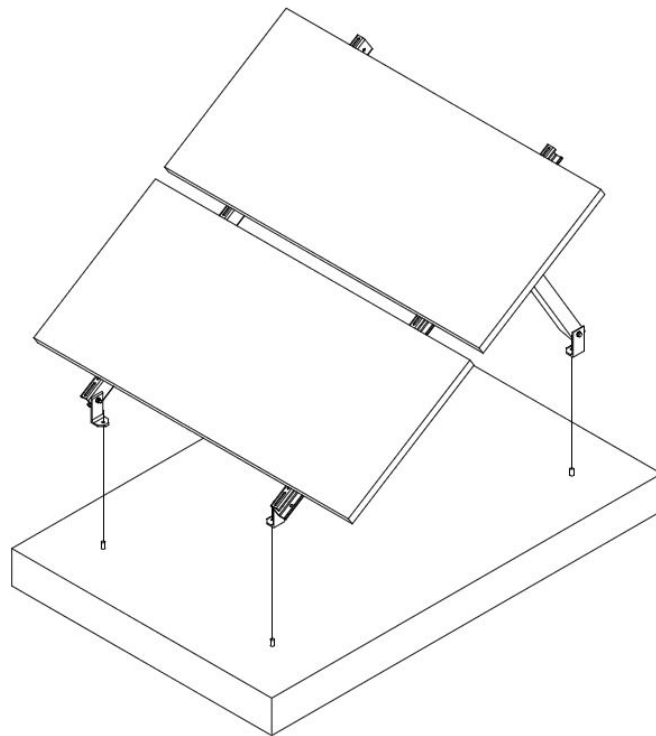
3. Attach the rear mounting feet to the ends of the tilt legs using the 5/16" hardware provided.



4. Flip the whole assembly over and adjust the tilt legs to the desired position.



5. Tighten all bolts. For 5/16" hardware, tighten using a 1/2" wrench to 10-12 ft. lbs. torque.
6. Place the assembly on the concrete pad making sure the modules face south.
7. Mark the location of the mounting feet holes on the concrete to install the anchors.
8. Once anchors have been installed, lower the mounting feet onto the anchors and bolt them down.



9. Check alignment of all assembled parts and ensure all bolted connections are tight.