

Premium Battery Enclosures: M Series



Featuring a hammered white-powder finish, the M-Series Enclosure line is NEMA3R rated with hinged, pad-lock latches. Designed for pole or pad mounting options. Locking hinge allows for service of equipment. Elevated skid feet, (3-4) rear-side 1/2" electrical knockouts plus (4) bottom-side 1/2" electrical knockouts. All Power Ready Express (PRE) Control Panels fit in M-Series enclosures.

SWPB Part #	Model	Finish	Quantity x Battery Group	Locking Feature	H x W x D (inches)	Weight (lbs.)
260020	M1-24	Powder-coated	1 x G24	Pad-Lock Latch	14.50 x 11.70 x 7.5	14
260012	M1-31	Powder-coated	1 x G31	Pad-Lock Latch	20.75 x 16.00 x 9.5	17
260010	M1-8D	Powder-coated	1 x 8D or 3 x G31	Pad-Lock Latch	20.75 x 24.75 x 14.5	28
260019	M1-8D	Powder-coated	2 x 8D or 6 x G31	Pad-Lock Latch	36.60 x 25.00 x 14.5	48

M Series Power Electronics Mounting Panel Options

SWPB Part#	Model	Description	H x W x D (inches)	Weight (lbs.)
004228	F-HC-RP-B	Rear Panel-Blank	15.0 x 6.5	1.0
004237	F-HC-RP-D	Rear Panel-Drilled	15.0 x 6.5	1.0
004135	BC-45-60	Rear Panel-Drilled	15.0 x 7.5	1.0
007871	F-HC-RSP-1B	Rear Panel-Blank	8.75 x 3.75	0.5
007872	F-HC-RSP-2/4B	Rear Panel-Blank	9.5 x 6.25	0.5
250057	M-24-RP	Rear Panel-Drilled	9.75 x 4.0	0.5
240015	Radio Shelf	Radio Shelf	15.0 x 7.5	1.0

Premium Battery Enclosures: F Series



Cost-effective solutions for housing one to four batteries (up to group size 31) with supporting equipment. NEMA3R rated, white power-coated or mill-finished aluminum enclosures feature hinged, key-lockable doors with dust covers on locks and gasketed door. Passive cooling ventilation. Two rear 1/2" electrical knockouts.

SWPB Part #	Model	Finish	Quantity x Battery Group	Locking Feature	H x W x D (inches)	Weight (lbs.)
004154	F1	Powder-coated	1 x G31	Keyed latch	20.8 x 16.0 x 9.4	25
004144	F1	Mill-finished				
004219	F2	Powder-coated	2 x G31	Keyed latch	20.8 x 16.0 x 14.4	30
004319	F2	Mill-finished				
004222	F4	Powder-coated	4 x G31	Keyed latch	32.0 x 16.0 x 15.4	40
004145	F4	Mill-finished				
014326	F4	Powder-coated	4 x G31	Keyed latch	26.0 x 20.0 x 20.0	40
012436	F4	Mill-finished				
260003	F4-Tall	Powder-Coated	4 x G31	Keyed Latch	46.0 x 16.0 x 15.75	45
260007	F-10x8D	Powder-coated	10 x 8D	Door lock hasp	29.3 x 70.3 x 30.3	441

F- Series Bracket Accessory Options (Sold separately)

SWPB Part#	Model	Finish	Description	H x W x D (inches)	Weight (lbs.)
004386	F-BKTSET	Power-coated	Pole Mounting Bracket	2 x 2 x 13	2.0
004373	PD-MTGBKTSET	Mill-finished	Pad Mounting Bracket	1.6 x 1.6 x 20	4.0

Premium Battery Enclosures: T Series



NEMA3R rated, white powder-coated or mill-finished aluminum enclosures feature hinged, pad-lockable lids. Locking hinge allows for service of equipment. Elevated skid feet, (2) left-side ½" electrical knockouts.

SWPB Part #	Model	Finish	Quantity x Battery Group	Locking Feature	H x W x D (inches)	Weight (lbs.)
004230	T-2X8D	Powder-coated	2 x 8D or 3 x 4D	Door lock hasp	20.5 x 31.3 x 23.8	55
004140	T-4X8D	Powder-coated	4 x 8D or 4 x 4D	Door lock hasp	20.5 x 48.3 x 23.8	75
004233	T-6X4D	Powder-coated	6 x 4D or 4 x 8D	Door lock hasp	20.5 x 48.3 x 30.3	100
004234	T-8X4D	Powder-coated	8 x 4D or 6 x 8D	Door lock hasp	20.5 x 48.3 x 40.3	125
016897	T-8X8D	Powder-Coated	8 x 8D	Door lock hasp	20.5 x 48.3 x 46	150

Economy Battery Enclosures: E/C Series



Aluminum enclosures feature removable covers with stainless steel screws. NEMA3R rated, mill-finished metal enclosures with (2) rear ½" electrical knockouts and rear louver vents. E-series include (3) bottom ½" knockouts and an external mounting tab for 2" pipe U-bolts.

[\(E Series Enclosures – No Bracket needed\)](#)

[\(C Series Enclosures – Economy Bracket Set – Sold Separately\)](#)

SWPB Part #	Model	Finish	Quantity x Battery Group	Locking Feature	H x W x D (inches)	Weight (lbs.)
004141	E1-38	Mill-finished	1 x GU1	N/A	11.3 x 9.1 x 5.9	4
004158	E1-63	Mill-finished	1 x G22	N/A	14.5 x 10.3 x 7.5	6
004160	C1-125	Mill-finished	1 x G31	Door lock hasp	17.0 x 16.0 x 9.38	12
004142	C2-250	Mill-finished	2 x G31	Door lock hasp	17.0 x 16.0 x 14.3	17
004143	C4-500	Mill-finished	4 x G31	Door lock hasp	32.0 x 16.0 x 14.3	25

C Series Bracket Accessory Options

SWPB Part#	Model	Finish	Description	H x W x D (inches)	Weight (lbs.)
004387	E-BKTSET	Mill-finished	Pole Mounting Bracket	2 x 2 x 13	2.0
004373	PD-MTGBKTSET	Mill-finished	Pad Mounting Bracket	1.6 x 1.6 x 20	4.0

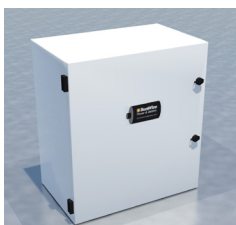
Premium Battery Enclosures: UPS Series



The SunWize Power UPS Cabinets are targeted for battery backup system applications. These white powder-coated aluminum enclosures feature hinged, key lockable doors with dust covers on locks and gasketed doors. The UPS Cabinets have two separate enclosures; one for a system's batteries and one for the electronics and hold up to sixteen L16, eight 4D, or six 8D batteries.

SWPB Part #	Model	Finish	Quantity x Battery Group	Locking Feature	H x W x D (inches)	Weight (lbs.)
260004	UPS	Powder-coated	18xG27; 18xG31; 12xL16; 8x4D or 4x 8D	Key-Lockable	66.0 x 36.0 x 25.0	195
260017	UPS	Powder-coated	8x4D; 4x8D or 16xL16	Key-Lockable	46.8 x 36.0 x 25.8	132
260018	UPS	Powder-coated	N/A	Key-Lockable	19.1 x 36.0 x 25.9	60

Premium Wide Battery Enclosures: WF Series



Wide battery enclosures to accommodate larger back panels for more support equipment. NEMA3R rated, white powder-coated or mill-finished aluminum enclosure feature hinged, key-lockable doors with dust covers. Passive cooling ventilation with bottom inlet vents and rear-louver outlet vents. The 9" deep cabinets feature: (4) bottom ½" electrical knockouts. The 16" deep cabinets feature: (2) rear ½" and (2) rear 1" electrical knockouts.

SWPB Part #	Model	Finish	Quantity x Battery Group	Locking Feature	H x W x D (inches)	Weight (lbs.)
004199	WF2	Powder-coated	2 x G31	Keyed latch	30.0 x 27.0 x 9.0	36
004146	WF2	Mill-finished				
004138	WF4	Powder-coated	4 x G31	Keyed latch	30.0 x 27.0 x 16.0	46
017146	WF4	Mill-finished				

Bracket Accessory Options (Sold separately)

SWPB Part#	Model	Finish	Description	H x W x D (inches)	Weight (lbs.)
004386	F-BKTSET	Power-coated	Pole Mounting Bracket	2 x 2 x 13	2.0
004373	PD-MTGBKTSET	Mill-finished	Pad Mounting Bracket	1.6 x 1.6 x 20	4.0

Large Power Electronics and Battery Enclosures



Special order items large enough to accommodate your equipment. NEMA3R rated, white powder-coated aluminum enclosures feature hinged, key lockable doors with dust covers on locks and gasketed door. Passive cooling ventilation. Two rear ½" electrical knockouts.

SWPB Part #	DWG Number	Primary Purpose	Features & Attributes	H x W x D (inches)
004137	291-00-186	Inverter/Electronics	(4) vertical struts on back wall top to bottom, front double door	60 x 48 x 16
014865	291-22-007	Inverter/Electronics	(4) vertical struts on back wall top to bottom, front double door	60 x 48 x 24
004148	291-22-004	Inverter/Electronics	(4) vertical struts on back wall top to bottom, front double door	72 x 60 x 16
007750	293-00-165	Battery Cabinet	Front double door, removable top for installing large batteries	60 x 48 x 32
007749	293-00-122	Battery Cabinet	Front double door, with fixed shelves, fixed top	48 x 60 x 23
004315	291-22-005	Battery Cabinet	Front double door, removable top	48 x 60 x 32
004310	291-22-002	Battery Cabinet	Front double door, removable top	72 x 72 x 32

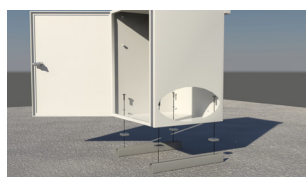
Pole Mounting Bracket for F and C Series Enclosures



Aluminum brackets feature a slot design allowing use of 2" – 8" pipe diameter U-Bolts or band clamps, and a slot that allows up to 1" thick banding for large diameter pole mounting. Brackets feature tamper-resistant design and include stainless steel mounting hardware (U-bolts not included).

SWPB Part#	Model	Finish	Description	Dimensions H x W x D (inches)	Weight (lbs.)
004386	F-BKTSET	Power-coated	Premium	2 x 2 x 13	2.0
004387	E-BKTSET	Mill-finished	Economy	2 x 2 x 13	2.0

Pad Mounting Brackets for F and C Series Enclosures



Pre-cut aluminum channel allows the enclosure to be mounted to the ground without impeding door operation or ventilation. The kit includes (2) pre-cut and drilled struts and mounting hardware to mount the enclosure to the bracket. Pad mounting hardware not provided. The enclosure must be drilled to accept mounting hardware.

SWPB Part#	Model	Description	Dimensions H x W x D (inches)	Weight (lbs.)
004373	PD-MTGBKTSET	Pad Mounting Bracket	1.6 x 1.6 x 20	4.0

Power electronics Mounting Panels



Panels are made of 0.080" MIN brushed aluminum with mounting holes aligned for enclosure's interior studs. Rear panels can be purchased blank or with optional pre-drilled configuration for mounting of control equipment. F-HC-RP-B and F-HC-RP-D are universal fits, accommodating a G31 size battery or larger. F-HC-RSP models for use in F-series enclosures only.

SWPB Part#	Model	Description	Dimensions H x W (inches)	Weight (lbs.)
004228	F-HC-RP-B	Rear panel-blank	15.0 x 6.5	1.0
004237	F-HC-RP-D	Rear panel-drilled	15.0 x 6.5	1.0
007871	F-HC-RSP-1B	Right side-blank	8.75 x 3.75	1.0
007872	F-HC-RSP-2/4B	Right side-blank	9.5 x 6.25	0.5
004135	BC 45-60	Rear panel	15.0 x 7.5	1.0
004198	MP-T	T-series top panel-drilled	17.0 x 17.0	3.0
007877	WF-RP-D	Rear panel	24.0 x 16.0	2.5
250004	250004	Rear panel	13.3 x 15.4	2
250005	250005	Rear panel	13.3 x 9.5	2
250057	250057	Rear panel	9.8 x 4.0	1

