



**SunWize**  
FUELED BY CHALLENGE



[Our Website](#)

# SUNWIZE 2023

**SunWize Power & Battery is the premier power equipment provider. We develop, design, and build resilient remote power systems. We also design and build electronic assemblies for integration into OEM products and field applications.**

40 years of proven excellence

Custom-designed power systems

- Stand-alone off-grid
- Hybrid solar systems
- Power backup systems

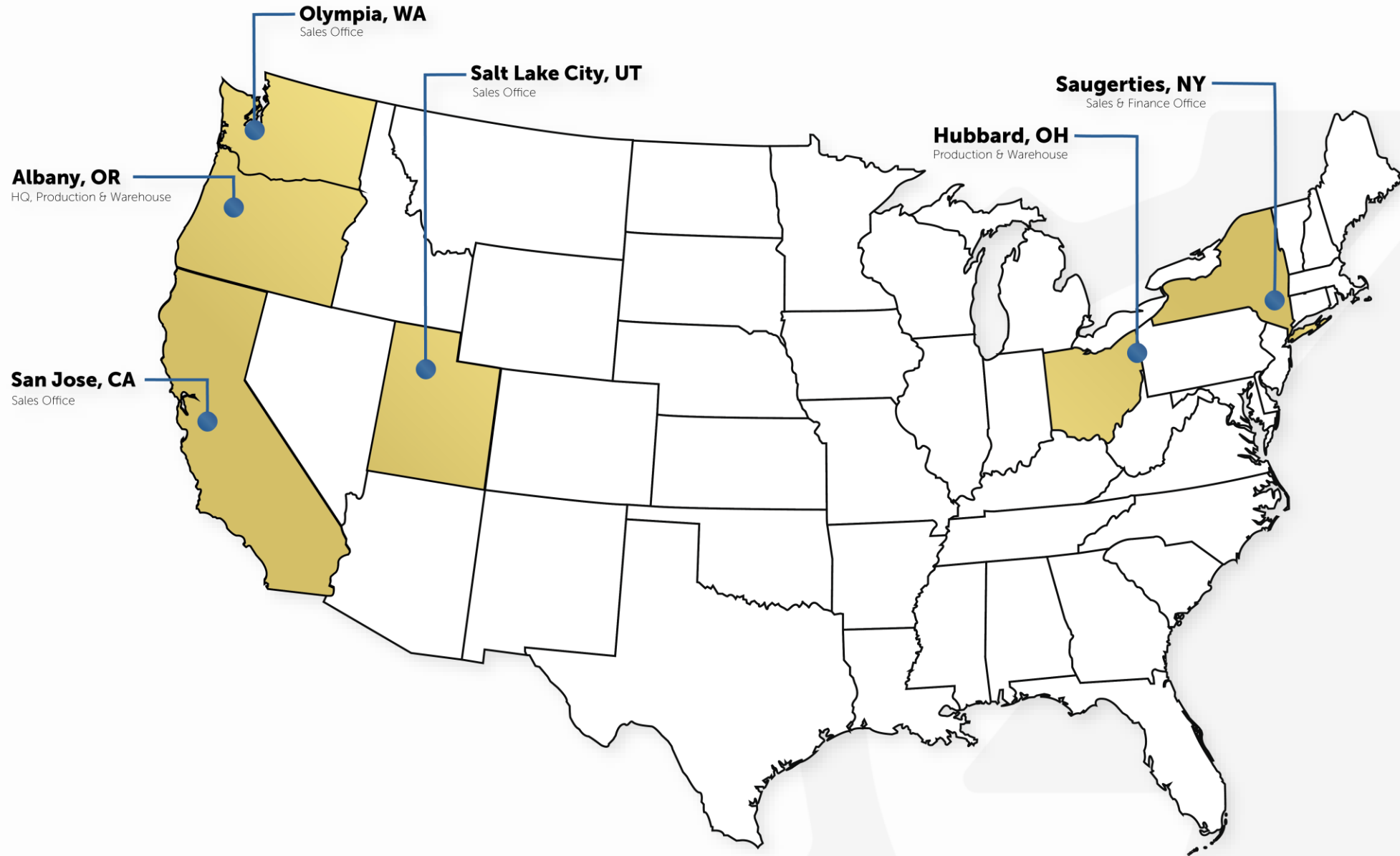
Off-the-Shelf control panels and solar systems

East and West coast manufacturing

Privately owned and operated



# LOCATIONS





# PRODUCTS & SERVICES



## PRODUCTS

Off-Grid Autonomous Power Systems  
Remote/Outdoor Battery UPS Systems  
Rugged Outdoor Solar Mounts  
Rugged Outdoor Enclosures  
Hybrid Power Systems (Solar/Wind/Generator)  
Components and Sub-Assemblies

## SERVICES

Solar System Sizing and Design  
Hybrid Power System Design and Analysis  
Design for Back-up Power Systems  
Consulting Engineering  
Assembly and Testing

[READ OUR CAPABILITY STATEMENT](#)



# IN-HOUSE ASSEMBLY / QC TESTING



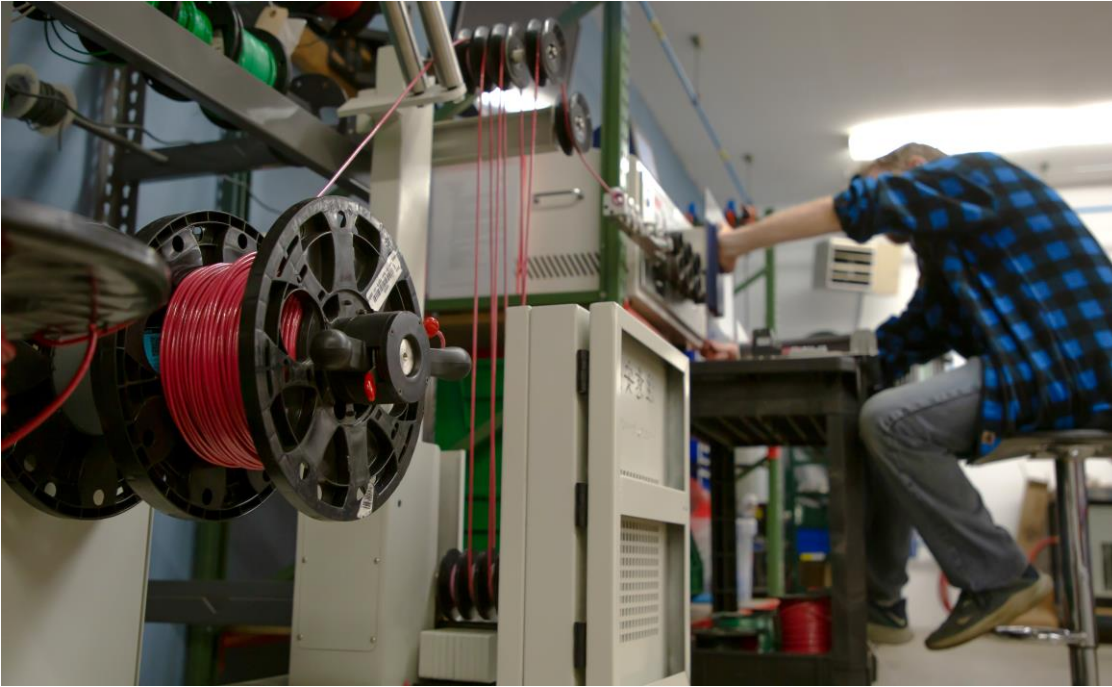
All of our System Design, Assembly, and QC testing are done in-house in our Oregon and Ohio facilities.

This allows us to ensure that everything that we ship is up to our standards, and ready to be deployed in the field.





# AUTOMATED PRODUCTION



Our state-of-the-art automated production capabilities include our wire-bending machine, which allows us to ensure consistency between all of the control panels we produce and saves time for our production team.

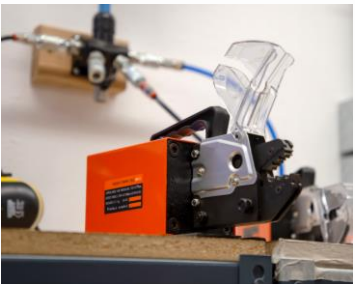
Additionally, we utilize pneumatic tools to ensure that all of our wire crimps and connections are tight and secure.

## AUTOMATED CAPABILITIES

Wire bending

Wire stripping

Wire crimping



# TYPES OF CUSTOM SYSTEMS

Custom designed by our team of experts to power your load when and where you need it



## STAND ALONE SOLAR

Stand-alone solar systems are exactly what they sound like. They are a self-contained unit using solar for power generation, and batteries for energy storage.

### Great For

Sites with Limited Accessibility

Low Power Devices

Areas with Moderate to High Winter Solar Resources

[\*\*LEARN MORE\*\*](#)

## HYBRID SOLAR

Hybrid Solar systems utilize solar power and a secondary charging source such as a generator, fuel cell, or wind turbine.

### Great For

Sites with Good Accessibility

High Power Devices

Areas with Low Winter Solar Resource

[\*\*LEARN MORE\*\*](#)

## POWER BACK-UP

Power back-up systems are designed to be dependent on an external charging source, and to provide power when that power source is disconnected.

### Great For

Preventing Site Down Time

Backup Critical Safety Equipment

Keeping Communication Equipment Online

[\*\*LEARN MORE\*\*](#)



# APPLICATIONS



AUTOMATION AND CONTROL



LIGHTING AND SIGNAGE



OIL AND GAS



TELECOMMUNICATIONS



RAILWAY



SEISMIC MONITORING



REMOTE IOT SOLUTIONS



TRANSPORTATION AND SAFETY



ENVIRONMENTAL MONITORING



WATER AND WASTEWATER



SECURITY AND SURVEILLANCE



AIRPORT NOISE MONITORING



DEFENSE AND MILITARY



DISASTER PREPAREDNESS



UTILITIES



AGRICULTURE



CATHODIC PROTECTION



FAA RADIO TOWER LIGHTING



ROADSIDE DATA COLLECTION



GOVERNMENT

## SOME OF OUR CLIENTS







# EXCLUSIVE PRODUCTS

Only From SunWize



# POWER READY EXPRESS SYSTEMS



~960W P.R.E System - [270373](#)



~650W P.R.E System - [270351](#)



~325W P.R.E System - [270350](#)



~150W P.R.E System - [270310](#)

## Turnkey Power Systems Ready to Ship

SunWize Power Ready Express (P.R.E.) systems combine the benefits of a custom-designed system and the convenience of a ready-to-ship pre-designed product that comes with everything you need to power an off-grid load.

We design our P.R.E. systems from the ground up, so you can be assured all the module cables, circuit breakers, and wire are sized properly for the included array and batteries, ensuring safety and product longevity.

Some of the other benefits of purchasing one of our P.R.E. systems include easy-to-follow installation documentation, technical support, and a minimum 1-year manufacturer warranty on the major component in the system.

### P.R.E. systems include

- Solar Modules
- Module Cables
- Solar Mount
- Equipment Enclosure
- Wired Control Panel with Charge Controller
- Batteries

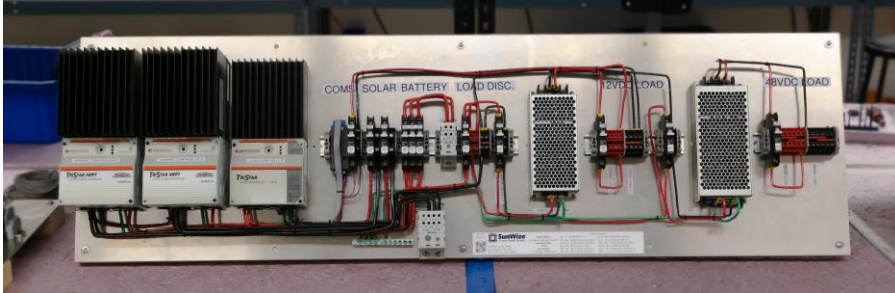
**SHOP NOW**

\*Exact system components are subject to change based on current part availability. See our website for a full list of all available P.R.E Systems





# CONTROL PANELS



Example of a [Custom Designed Control Panel](#)

## Custom or Pre-Built Control Panels

We carry a wide variety of predesigned and ready-to-ship control panels. These control panels come with a solar charge controller, breakers, wire, and open terminal blocks for connecting your load. These control panels make it easy to set up a power system.

They come pre-built on back plates that are designed to fit into our M, F, and T series of enclosures. some exclusions apply, give us a call or visit our website for more details.

If you don't see the exact control panel that you need for your application, then we can work with you to design and build a custom control panel to make sure you have exactly what you need.

We also have a selection of accessory panels, with things like inverters, DC/DC Converters, and communication equipment, that are designed to be used with our control panels.



SunSaver 15A MPPT - [230067](#)



ProStar 40A MPPT - [230055](#)



ProStar 30A - [230042](#)



Solisto 30A - [230179](#)

**SHOP NOW**



# SUNWIZE SOLAR MODULES



The SunWize line of modules are high-quality solar modules selected to be the best combination of price, size, and reliability.

We have industrial modules ranging from 30W to 450W in size.

We offer modules with fire rating (UL 61730) and C1D2 certifications.



320W 24V Module – [020295](#)

C1D2 Rated

Fire Rating UL 1703



195W 24V Module – [020967](#)

C1D2 Rated

Fire Rating UL 1703



50W 12V Module – [020117](#)

C1D2 Rated

Fire Rating UL 1703

**SHOP NOW**

\*non C1D2 and MC4 Versions of these modules are available, see our website for all available SunWize Solar Modules





# SUNWIZE ENCLOSURES



## M-SERIES

Powder Coated, Pole Mountable,  
Pad-lockable

[SHOP M SERIES](#)



## F-SERIES

Powder Coated, Pole Mountable,  
Key-locking

[SHOP F SERIES](#)

SunWize Enclosures are designed to meet the needs of the off-grid industrial power market. We have several different lines of enclosures, from large ground-mounted cabinets to small pole-mounted enclosures.

There are multiple enclosures in each series, each one designed to hold a different capacity of batteries.

Visit our website for a full list of all the enclosures that we offer.

[SHOP ALL ENCLOSURES](#)



## W-SERIES

More Equipment Space, Pole  
Mounted, Key-locking

[SHOP W SERIES](#)



## H-SERIES

Large ground-mounted front  
opening cabinets

[SHOP H SERIES](#)



## T-SERIES

Powder Coated, Pad Mountable, Top  
Opening, Pad-lockable

[SHOP T SERIES](#)



# SUNWIZE SOLAR POLE MOUNTS



[1 Module SOP Mount](#)

Hold up to 410W of Solar

4" – 6" Pole **240002**

6" - 10" Pole **240007**



[2 Module SOP Mount](#)

Hold up to 800W of Solar

4" – 6" Pole **240003**

6" - 10" Pole **240008**



[3 Module SOP Mount](#)

Hold up to 1200W of Solar

6" - 10" Pole **240060**



[27" SOP Mount](#)

Hold up to 65W of Solar

2" – 4" Pole - **007985**

The SunWize Side of Pole mounts are durable mounts designed to hold arrays ranging from 50W to 1200W.

Our mounts feature our patented easy mounting bracket, and are wind-rated up to 140 MPH, and snow load rated up to 60PSF.

Wind and snow ratings are based off array angle, and array size. Contact us for more details.

Visit our website for a full list of all the solar mounting options.

**SHOP NOW**





# SUNWIZE GROUND MOUNTS

SunWize offers a series of ground mounts that are designed to be easy to deploy, and easy to move.

**240010 & 240005** are skids made from aluminum parts that are bolted together. This makes the mount lightweight, and easy to disassemble and move.

**250160** is a solid galvanized steel skid. The skid is still easy for two people to lift but offers more rigidity and requires less ballast than the aluminum skid. The Steel Skid is designed to be used with either the [M2-8D](#) or [T4x8D](#) Enclosure.



96" Aluminum Skid - [240010](#)  
(Shown with [260019](#) M2-8D Enclosure)

Hold up to 750W of Solar

Compatible with many SunWize Enclosures

[LEARN MORE](#)



60" Aluminum Skid - [240005](#)

Hold up to 500W of Solar

Compatible with many SunWize Enclosures

[LEARN MORE](#)



Galvanized Steel Skid Base - [250160](#)  
(Shown with [260019](#) M2-8D Enclosure & [240037](#) 96" RGM)

Hold up to 500W of Solar

Compatible with T4x8D and M2-8D Enclosures

[LEARN MORE](#)



# SUNWIZE POWER STATION MOUNTS



Shown with (2) T4x8D Enclosures



Shown with (1) WF4 Enclosure



Shown with (2) T8x8D Enclosures and (1) M2-8D Enclosure

The SunWize Power Station is a large ground-mounted solar mounting structure.

The Power Station is designed to be a self-contained system or be used as part of a larger system. There is space to mount battery enclosures, control enclosures, and combiner boxes, making assembly easy.

The Power Station mounts have a wind rating of 120MPH and a snow load rating of 50PSF (Exposure "C" @ 45 °)

These mounts require far less ground penetration than a comparably sized Top of Pole mount, making them perfect for areas where digging is difficult or impractical because of soil conditions.

[LEARN MORE](#)





# OTHER PRODUCTS



Phocos AnyGrid Inverter/Charger



Morningstar GenStar Charge Controller



Solisto Solar Batteries



Cotek CX2440 Battery Charger



MeanWell DC-DC Converter



Cotek Inverter

SunWize has a wide variety of system components available from our partners including

Solar Charge Controllers

Batteries

Battery Chargers

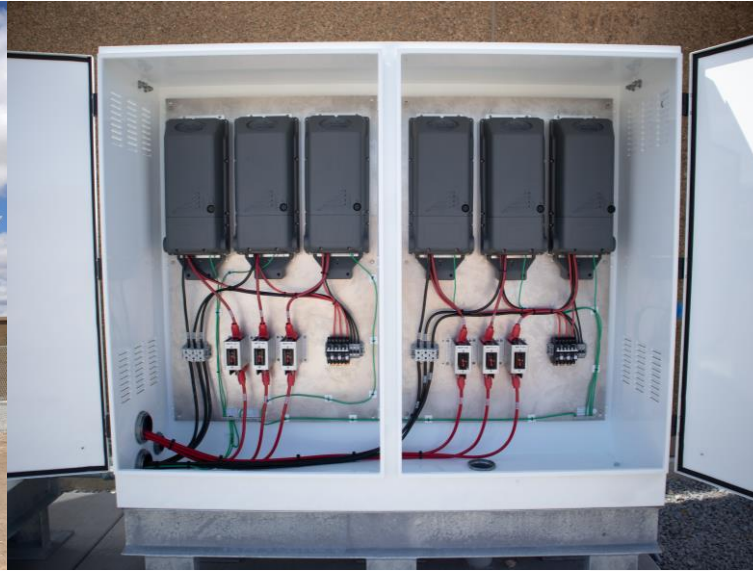
Inverters

DC/DC Converters

**SHOP NOW**



# CASE STUDY



## DOT Telecom Site

**Array Size** – 35,520 W

**Battery Capacity** – 5860Ah

**System Voltage** – 48V

**System Type** – Hybrid

**Solar Mount** – Power Station Mount

**Enclosures** – 260002 Control Enclosure

**Batteries** – DEKA 2V Unigy II Interlocking Batteries

A state Department of Transportation required several large Hybrid systems for a closed-loop communication network for emergency services and civil defense networks. Systems utilized multiple metal array support structures from the SunWize Power Station line of products. Includes Outback Radian GS8048A-01 Inverter Charger, 100A-rated MPPT solar charge controllers, and all pre-assembled power control panels. Systems commissioned through the beginning of 2020. Installation by Radco.





# CASE STUDY



## California Utility

**Array Size** – 130 W

**Battery Capacity** – 108Ah

**System Voltage** – 12V

**System Type** – Stand-Alone Solar

**Solar Mount** – 27.5" SOP Mount

**Enclosures** – 004154 F1 Enclosure

**Solar Controller** – SunSaver 20A

A major utility company from Southern California contacted us because they needed to install some sensitive monitoring equipment on power poles. The power lines they needed to install this equipment on is carrying 12,000VAC power, however, their device requires 12VDC.

*"Solar also allows me to install the sensor without touching the primary (12,000 volt) wires and adding equipment that might cause a huge wildfire. Adding 12,000-volt components (small power transformer, fuse, fuse cutout, lightning arrestor, jumpers) adds to our risk very slightly but the solar at 12v is pretty much fireproof."*

[READ MORE](#)







**SunWize**  
FUELED BY CHALLENGE

## THANK YOU

Visit our website or give us a call to learn more

(866) 827-6527



[Our Website](#)

